



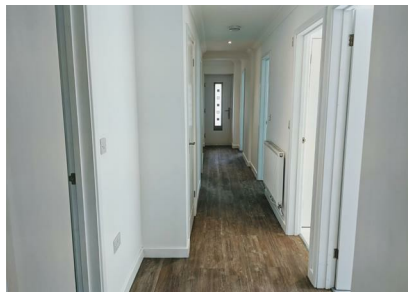
St. Margarets Drive, Brandon, IP27 0JP

Rent - £1,750 PCM Deposit - £2,019

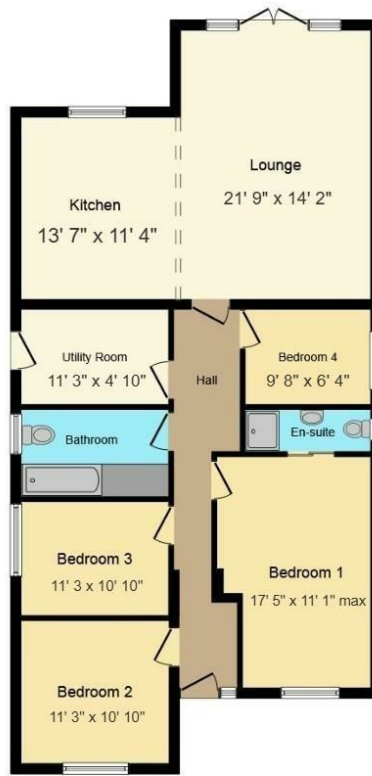
This spacious and beautifully presented four-bedroom detached bungalow is set in a quiet residential location in Brandon, offering modern open-plan living with plenty of natural light throughout. The property features a contemporary fully fitted kitchen with integrated appliances, flowing into a generous lounge/dining area with French doors opening onto the rear garden—perfect for both everyday living and entertaining.

The accommodation further comprises four well-proportioned bedrooms, including a master with en-suite, alongside a stylish family bathroom. Externally, the property benefits from a private rear garden with patio and lawn, as well as a driveway providing ample off-road parking.

- FOUR BEDROOMS
- OPEN PLAN LIVING
- EN SUITE
- DRIVEWAY PARKING & PRIVATE GARDEN
- COUNCIL TAX BAND - B
- DETACHED BUNGALOW
- MODERN KITCHEN
- UTILITY ROOM
- EPC RATING - C
- EARLY VIEWING ADVISED



Council Tax Band: B - EPC Rating: C 72



Floor Plan

This Floor Plan is for illustration purposes only and may not be representative of the property. The position and size of doors, windows and other features are approximate. Unauthorized reproduction prohibited. © PropertyBOX

